

Raiders News

March 3, 2022

Campus Closed Tomorrow, Friday, March 4!

Our campus is closed this Friday, March 4, due to the spring Teachers Conference. There will not be school for grades K-8 and Preschool. Shepherd's Care will not be available.

The teachers will be meeting with fellow WELS school teachers at our sister school Shepherd of the Hills Lutheran Church and School in La Mesa, CA to hear and participate in a presentation on curriculum: formative assessments, curriculum targets, assessment with data, and standards-based grading.

All classes will resume on Monday, March 7.

An Update from Ukraine

Comes from: <https://wels.net/an-update-from-ukraine/?fbclid=IwAR2ORdclOcvz99nxU7khqbfHhE-vJB4g1XoeJYNviR2DVxiV2f8BnTk6h4s>

WELS Ukraine liaison Rev. Roger Neumann has been able to maintain regular contact with leaders from the Ukrainian Lutheran Church (ULC), WELS' sister church body. As of Tuesday morning, Neumann is reporting that so far the members there remain physically unharmed. However, all but 2 of the 17 congregations, comprising approximately 600 members, are in the direct line of the Russian advance. Two of the pastors have been cut off from communication. Many were able to hold online or in-person worship during the invasion on Sunday morning.



Neumann reports, "There's a lot of fear, mixed with anger and bewilderment, as to why this is happening. They are very encouraged by the international support; very encouraged by the prayers of WELS people that are going out."

According to Neumann, some members have been able to flee the country. However, at this time, all Ukrainian men between ages 18 and 60 are required to remain to defend their country as needed. The people who have stayed are taking shelter at night in the underground subway stations and come out during the day to find food and supplies. So far, limited supplies are still available, but the shelves are getting emptier.

WELS is financially assisting two ULC churches in western Ukraine that are setting up refugee centers to welcome Ukrainians who are fleeing from war-torn areas in the east, but space and resources are limited. Hundreds of thousands of people are currently on the move. Money is also being sent to help buy supplies for these refugees. At the time of this writing, banks and supermarkets are still open. The situation is being closely monitored regarding how funds can be safely and effectively sent and used.

“When this is all said and done—and Lord willing, it’s going to be soon and Lord willing, it’s going to be where they will keep their sovereignty—there is going to be a tremendous need for humanitarian aid,” Neumann predicts. “Pray for Ukraine; pray for the people. That’s the number one thing, and the rest God will take care of in his way.”

If you’d like to give a gift to support these relief efforts, visit wels.net/wmgift and select “Ukraine” from the dropdown menu.



Weekly Panera Bread Donations

Panera Bread graciously donates their leftover bread and pastries to Reformation Church and School twice a week. If you are interested, please stop by Tuesday and Thursday mornings. Donations will be on a table in front of the church until they are gone.

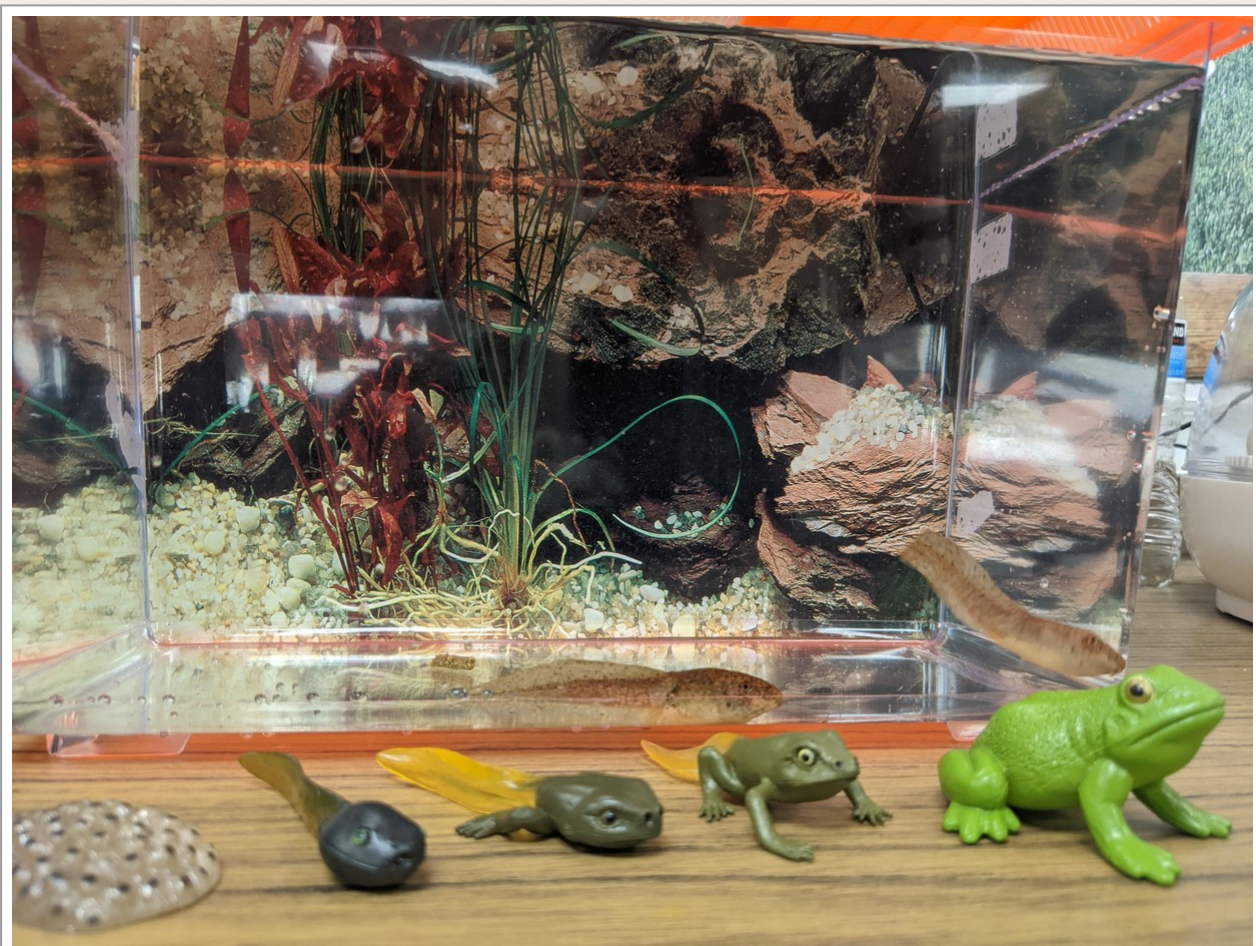


Update from Mrs. Bohl's Classroom

Our Kindergarten students are 100 days smarter! We had fun celebrating our 100th day of school last week. We have also been learning about the frog and duck life cycles. Our duck eggs should be hatching next week, and we are watching our two tadpoles start to form legs.

In social studies we are starting to learn about different cultures so have had fun doing crafts and activities connected to that. We had fun playing with the Japanese Carp Kites that the children made yesterday.







To everyone who donated, sorted, priced,
helped and hauled for the Rummage Sale:

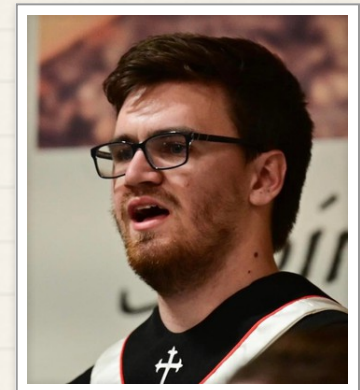
THANK YOU!



\$645.00 raised for mission work

Early Field Experience Teacher

Next week, March 7-11, Reformation will host an EFE teacher from Martin Luther College (MLC). MLC is the college that trains our teachers, pastors, and staff ministers for service in congregations by providing them their undergrad degrees. EFE stands for Early Field Experience and is part of the graduation requirements (along with student teaching) at MLC.



Mr. Ethan Coffee is in his 3rd year at MLC and will be spending the week in Mr. Bohl's 7/8th grade classroom. Throughout this week he will present selected lessons in order to become more aware of the unique opportunities involved in helping students learn, develop appreciation for the importance of thorough planning and preparation for teaching, gain insight into the complexity of a teacher's responsibilities, develop a greater understanding of the age group and the unique challenges this age group has to deal with, continue to develop professional observation skills, become aware of how God's Word is evident in instruction and classroom management in a Lutheran school, and become more committed to serve in the teaching ministry.

Save the Dates for Upcoming Events and Activities

EasterFest – Saturday, April 9, 2-4pm

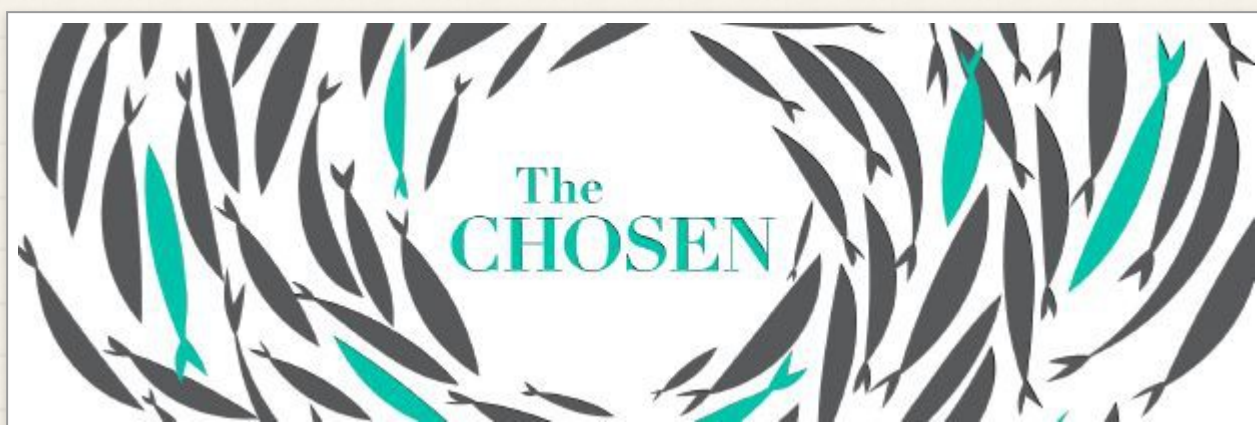
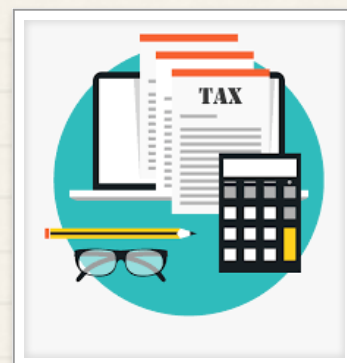
Family fun including Easter crafts, petting zoo, bounce house and egg hunts!

Vacation Bible School – July 25-29

Summer fun learning about Jesus' love, with a science-y twist!

2021 Statement and Payment Summary

At times, families are looking for a statement of their payments for a calendar year, for childcare or other school expenses. FACTS can provide you this statement with a few clicks at any time. You can choose a calendar year or a specific time frame for a payment summary report. Click [here](#) (attached pdf file) to see how to navigate to this statement in your FACTS account.



The Chosen: A New Bible Study Starting April 20

Join us as we watch episodes from Season One of The Chosen. We will begin the class by watching an episode and then spending some time in discussion of the episode afterward. Class will be held in the sanctuary. This Bible study is open to all ages and starts Wednesday, April 20 from 6:00 - 7:30pm.

What is the Chosen?

The Chosen is a "multiseason series about the life of Christ" and the people who followed Him. It dramatizes the stories of Peter, Philip, John, James, and the other disciples, giving historical context and some fictional plotlines to paint a picture of what Jesus' ministry looked like in the lives of real people – the ones we read about in the gospels. The Chosen is not meant to replace God in our minds or hearts, but to present a visual aid to one's existing journey with the Lord. Join us as we watch and discuss together this ever-popular show on the life of Christ!



Teenage Girls' Life Group

Shine: Sparkling with God's Love. The world needs to hear about God's grace. He wants us to shine His brilliant love into the darkness of sin. He wants us to reflect His love like billions of pieces of bright, brilliant glitter to those who are hurting. We will dig into God's word and find out how we can shine the Gospel of Jesus to His people. This after school study is for girls grades 5 – 8. We will meet on the back patio at 3:20 on Mondays. Books will be provided. A voluntary donation of \$5 is appreciated.

Next Men's Bible Study Is – March 12, 2022

We always need God's guidance and the reassurance that He loves us, especially when we face difficult challenges. We also need to remember that God uses even our most difficult challenges to bless us. But sometimes obvious blessings cause us to stumble just as much as the challenges do. This Bible study leads us to think about how redeemed children of God respond to blessings and challenges in a way that glorifies our Lord.

Join Mr. Mike Ross on the 2nd Saturday of each month at 9:00AM beginning November 13 for this five-week Bible study. If you have any questions, please contact Mike at rossm@refsd.org.



Re-enrollment Questionnaire for 2022–2023 School Year

Each year we try to best estimate our enrollment for the next school year so that we can plan our staffing and try to keep classroom sizes small. Please fill out this [form](#) to let us know whether your student(s) will be returning to Reformation for our 53rd year of Christian Education! If you have any questions about enrollment for next year, please feel free to reach out to Mr. Ross at principal@refsd.org or 858-279-3311. He would love to talk with you! Thank you for helping us plan for the next school year!

Please fill out this Google form to let us know: <https://forms.gle/LRJfZDHPCUKLv7ZV7>.

Re-enrollment Questionnaire for 2022-2023 School Year



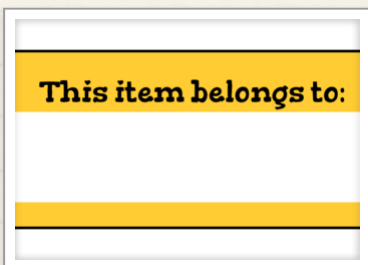
Face Masks

Some days our stock of masks is bountiful and some days we are very limited. Please make sure your child has a mask as they come into school each day. Bringing an extra doesn't hurt! Thank you!

NEW YEAR RE-BOOT REQUESTS

Pick Up Number Hang Tags

When you pick up your students after school, PLEASE be sure you display your pick up ID number in your vehicle. This is especially important for families of students in grades 1-8 picking up in the back parking lot. Sometimes it is difficult for our staff to see your friendly faces through the windows and sometimes we have other people helping out with identifying cars/parents picking up. Please help us out by displaying your number on your mirror or other prominent place. If you need a replacement hang tag, please request one from Sarah Rodrigues (rodrigues@refsd.org).

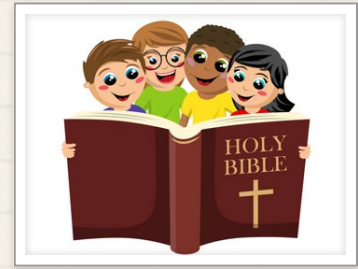


Student Belongings

Please label your student's belongings with their name. This includes water bottles, lunch boxes and clothing items such as jackets and sweatshirts. It's easy to find washable labels online or at stores like Walmart. Please also encourage your student to bring everything home each day. We know you invest your money in all of their items, and labeling them will help your items not be lost forever. Also, our campus will look great without a variety of things laying around at the end of each day. Thank you!

Bible Class for students in grades 5-8!

Mrs. Jessica Bohl has starting a new bible class for grades 5-8. This class will meet in the kindergarten room (room 6) from 9:30am to 10:15am and light snacks will be provided. We are looking forward to covering topical bible studies to help our students prepare to be the light in our broken world. See you there!



We are hiring! We need your help.

You can help us help you! Reformation Lutheran School is currently hiring (just like everyone else) for a few positions.

- Shepherd's Care Supervisor
- Preschool Classroom Aid

If you know of anyone who might have the time or qualifications, we would love to meet with them or spend some time talking with them about these open positions. Please refer anyone to principal@refsd.org. Thank you for helping us staff so that we can better serve the families of Reformation!

GOOD SHEPHERD BIBLE CAMP (GSBC) CONTEST

**GSBC
CONTEST
DESIGN THE
2022 THEME!**

EXTENDED!



We want YOU to design next year's theme!

- 3 Possible Winners!
 - Camper (4th-6th grade)*
 - Camper (7th-10th grade)*
 - Staff (11th grade+)*
- Prize for each winner:
 - A FREE week of camp!



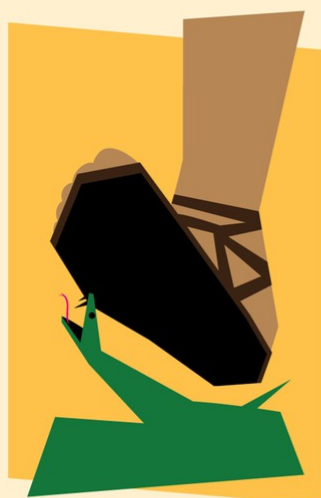
***Grades based on 2022-2023 school year**

Good Shepherd Bible Camp is hosting a contest, and we have extended our deadline! We want YOU to design our 2022 theme! What's the prize? A **FREE** week of camp for up to 3 individuals (two campers and one staff)! To enter, submit your name along with a theme, Bible verse, logo, and your name to gsbcmail@gmail.com by **February 11th** for a chance to win! For more information and to see past themes, head over to our Facebook page!

Ki's School Lunches – Order Today!

You can take a break from packing a lunchbox on Mondays and Thursdays by ordering from Ki's School Lunches! With more than 35 entrée choices each day, there is bound to be something your student will enjoy. Place orders online and cancel (when necessary) up to 8am the same day. Go to www.kisschoollunches.com or <http://reformationschoolsd.org/school-information/schoollunch-options/> for additional details and to create your account to place an order. The Ki's website has detailed information on the "How it Works" page. Orders must be placed by noon the day prior to lunch service. You can place orders for the entire month now.

There is an opportunity to volunteer to help with Ki's lunches distribution. Lunches are delivered to us shortly before lunchtime and volunteers distribute lunches to the students. Can you help with this? The time commitment is 11:30am-12:45pm on either Monday OR Thursday. We are asking for one adult volunteer for each day. Can you help? Contact Sarah Rodrigues at rodriguess@refsd.org or (858) 279-3311, ext. 1.



CRUSHED

**THE LORD SAVES
THOSE WHO ARE
CRUSHED IN SPIRIT.**

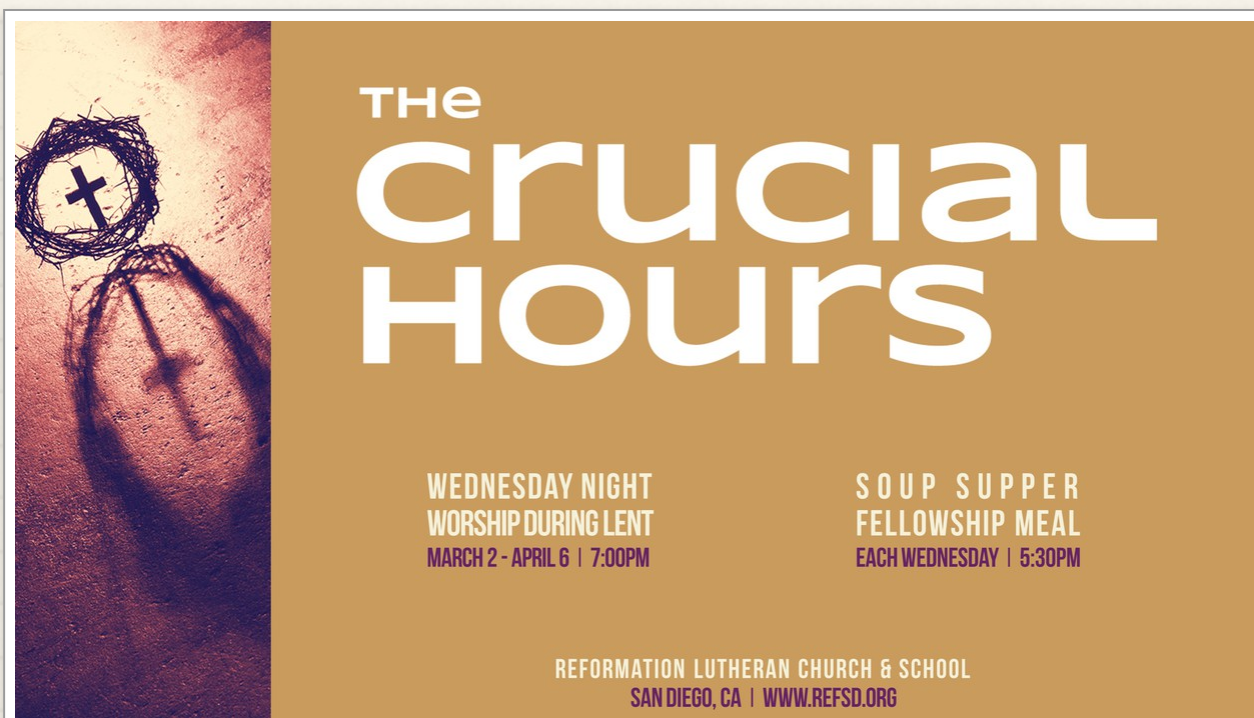
PSALM 34:18

**JOIN US FOR WORSHIP ON SUNDAYS
MARCH 6 - APRIL 3
8:00AM & 10:30AM**

**REFORMATION LUTHERAN CHURCH & SCHOOL
SAN DIEGO, CA | WWW.REFSD.ORG**

Crushed: A Worship Series for Lent at Reformation.

When someone is devastated or defeated or despondent we speak of them as being "crushed." It could be due to some agonizing loss or unrealized dreams that they are crushed. It could be due to carrying a heavy load of guilt over some past mistake that they are crushed. In a broken world, it is simply a matter of time before we feel crushed. That is why we need Lent. The word Lent comes from an Old English word for Spring – "lengten" – the time when the days grow longer. For 1400 years the Church has set aside the 40 days between Ash Wednesday and Easter as a time of repentance and renewal. Believers humbly acknowledge that sin is the ultimate source of all the crushing moments in life. Our sin even crushed Jesus. Yet, on Easter Sunday, Jesus took up his life again. Our Savior crushed both death and the serpent's head. Yes, Lent is a solemn season. But it is also a season of great hope. With the psalmist we say, "The Lord saves those who are crushed in spirit" (Psalm 34:18). Join us each Sunday this Lent for ***Crushed: A Worship Series for Lent at Reformation.***



The Crucial Hours – Lent 2022 at Reformation

Decisive. Critical. Crucial. When we describe something as crucial, we are indicating that it is of great importance and the cost of failure is extremely high. For example, tense negotiations are often described as being "at a crucial stage." A playoff football team's coach may describe winning their next game as "crucial to our survival."

The word crucial is derived from the Latin word for "cross." In that sense, the events of Holy Week – especially Holy Thursday and Good Friday – were crucial because they all led to Jesus' cross where the decisive, critical, crucial battle would be fought and won. Our weekly Wednesday worship during Lent will help us focus on those decisive events, those critical moments, those crucial hours, and how they were just that for Jesus, for those around him,

April

1 No Grade School - Spring Break (Preschool in session)

4 Teenage Girls' Life Group - 3:20pm

6 Lenten Worship Service 7:00pm

7 Spring Pictures

9 EasterFest 2:00-4:00pm

11 Teenage Girls' Life Group - 3:20pm

14 Maundy Thursday Worship Service 7:00pm

15 Good Friday Worship Service 7:00pm

17 Easter Worship Services 8:00am and 10:30am

18 Campus Closed - No Grade School, Preschool or Shepherd's Care - Easter Monday

20 The Chosen: Bible Study 6:00pm

25 Teenage Girls' Life Group - 3:20pm

27 The Chosen: Bible Study 6:00pm

Teenage Girls' Life Group - Mondays at 3:20pm

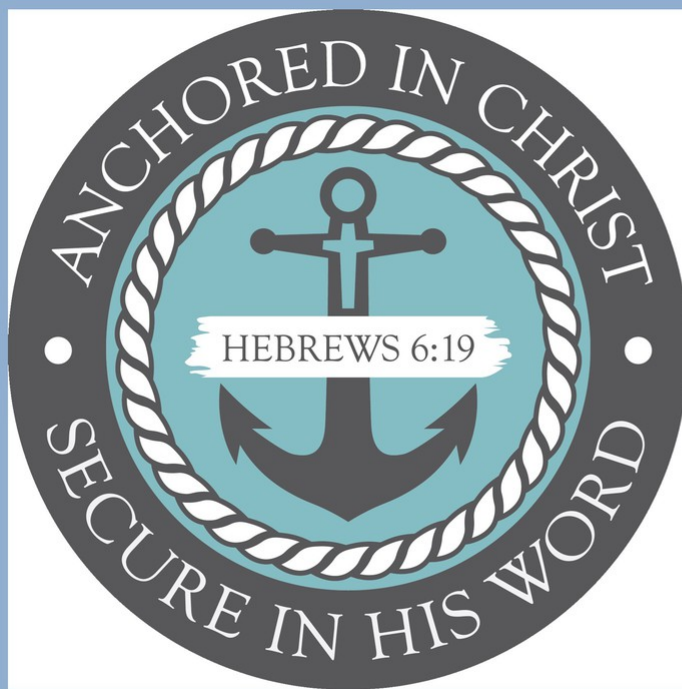
Chapel Service - Wednesdays at 8:30am

Worship Service - Sundays at 8:00am & 10:30am

Kids4Christ - Sundays at 9:30am

Foundations 101 - Sundays at 9:30 am

A monthly calendar is updated on our website, and a full school year calendar is available also. Click here to review these calendars. (<http://reformationschoolsd.org/calendar/>).



*We have this hope
as an anchor
for the soul,
firm and secure.*

Hebrews 6:19



About Us



The eternal truths of God's Word are the foundation of our school, its curriculum, and all its activities. Our goal in Christian education is to provide each child with the maximum development of God-given spiritual, physical, and mental abilities. We offer Christian education in our Preschool (ages 2.5-5) and Grade School (K-8).

Follow us on Instagram @reformation_school

📍 4670 Mt Abernathy Ave, San Di...

✉ school@refsd.org

☎ 858-279-3311

🌐 reformationsschools.org/